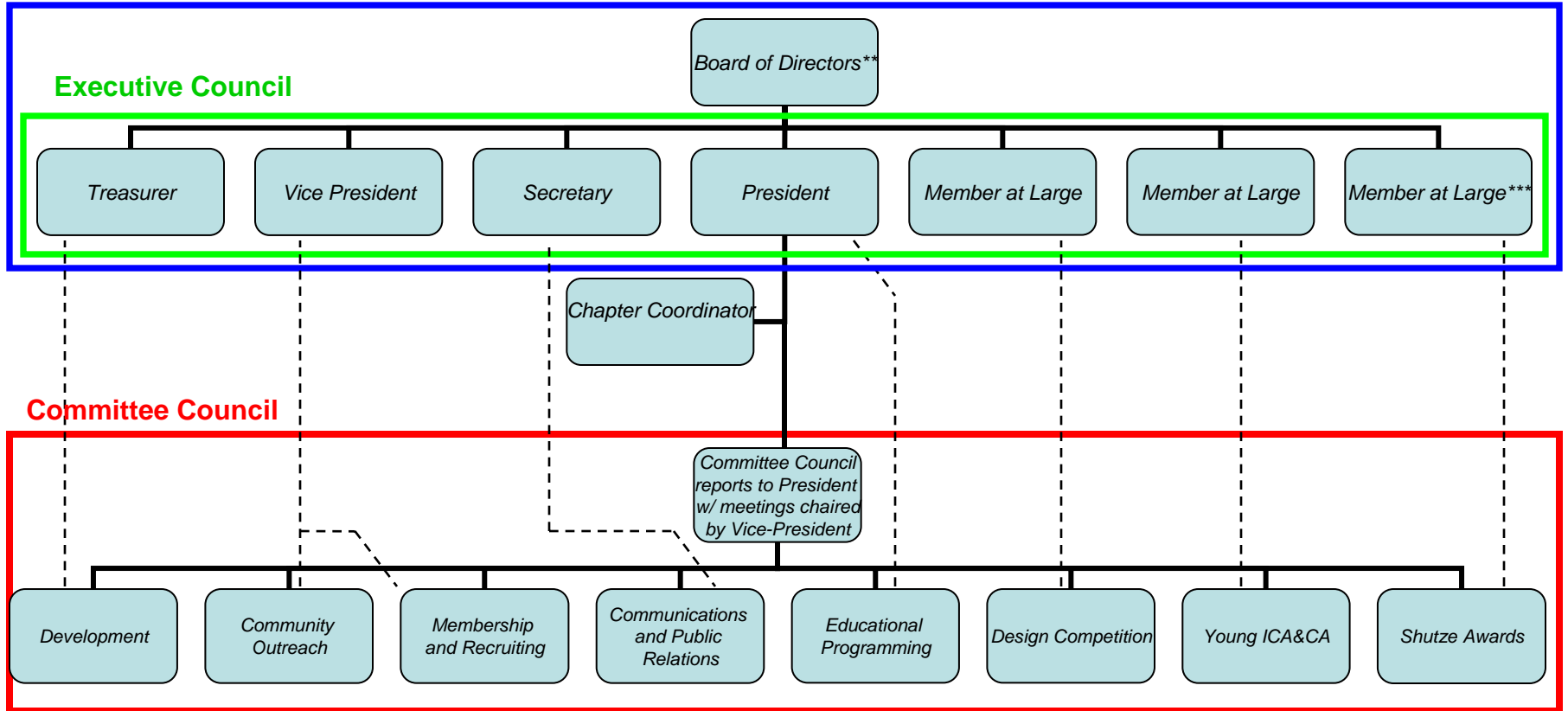




THE INSTITUTE OF
CLASSICAL ARCHITECTURE
& CLASSICAL AMERICA
SOUTHEAST CHAPTER

Board of Trustees*



————— Indicates Direct Chain of Responsibility
- - - - - Indicates Coordination/In-direct Chain of Responsibility

*The Board of Trustees (as defined in the bylaws) is comprised of the Board of Directors AND the Executive Council.
**Board of Directors: Includes past Founders and 8 additional members that rotate on an annual basis
***Young ICA&CA Committee has an elected representative to serve as one of the Members at Large on the Operations Board.